

## Product & Technology



# DC Plugs and Socket-outlets

## Swedish draft proposal

Merlin Gerin

Square D

Telemecanique

Göran Persson,  
2005-08-29

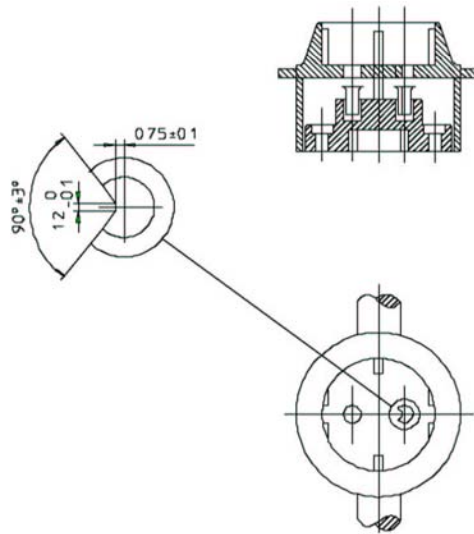
**Schneider**  
 **Electric**

# DC Plugs and Socket-outlets

DRAFT

## STANDARD SHEET III b

2,5A / 400 V DC Two-pole socket-outlet with side earthing-contacts for power supply of AC/DC equipment

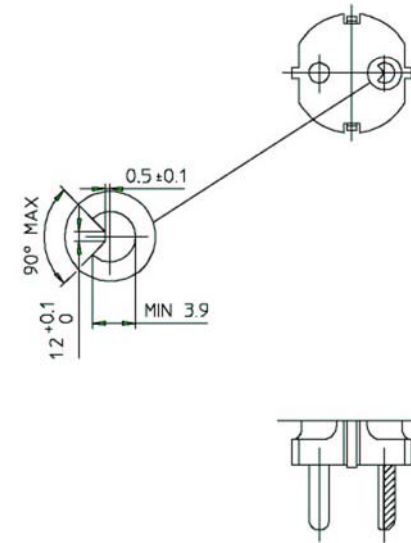


For other dimensions and specifications see standard sheet IV.  
The sketches are not intended to govern design except as regards the dimensions shown.  
Dimensions in mm.

DRAFT

## STANDARD SHEET IV b

2,5A / 400 V DC Two-pole socket-outlet with side earthing-contacts for power supply of AC/DC equipment

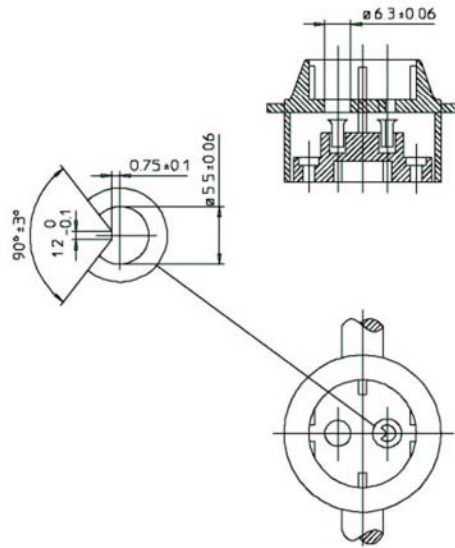


For other dimensions and specifications see standard sheet IV.  
The sketches are not intended to govern design except as regards the dimensions shown.  
Dimensions in mm.

# DC Plugs and Socket-outlets

DRAFT

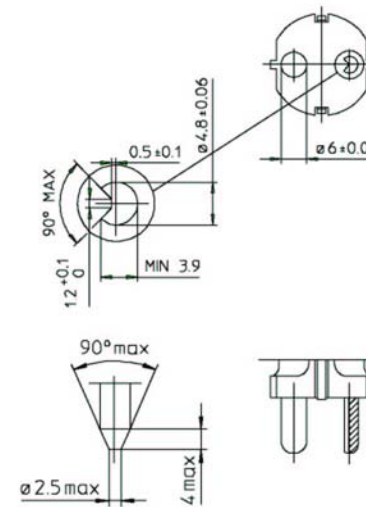
**STANDARD SHEET III c**  
 2,5A / 400 V DC Two-pole socket-outlet with side earthing-contacts  
 for power supply of DC equipment



For other dimensions and specifications see standard sheet IV.  
 The sketches are not intended to govern design except as regards the dimensions shown.  
 Dimensions in mm.

DRAFT

**STANDARD SHEET IV c**  
 2,5A / 400 V DC Two-pole socket-outlet with side earthing-contacts  
 for power supply of DC equipment



For other dimensions and specifications see standard sheet IV.  
 The sketches are not intended to govern design except as regards the dimensions shown.  
 Dimensions in mm.

# DC Plugs and Socket-outlets

- **IEC 60 884-1 Plugs and socket-outlets for household and similar purposes + national standards**
- **Examples of additions and changes necessary when adding DC**

- **1. Scope**

- Add: This standard does also apply to AC/DC and DC plugs and socket-outlets.  
The rated current is limited to 2,5 A for plugs and socket-outlets without interlock.

- **6. Rating**

Add a new row in table 1

Type	Rated voltage V DC	Rated current A DC
2 P plug	400	2,5
2 P		

## 8.1 Marking

Add.

Socket-outlets according to standard sheet III b shall be marked AC/DC

Socket-outlets according to standard sheet III c shall be marked DC

Plugs according to standard sheet IV b shall be marked AC/DC

Plugs according to standard sheet IV c shall be marked DC

## 8.2

Add the symbol for direct current

# DC Plugs and Socket-outlets

- **IEC 60 884-1 Plugs and socket-outlets for household and similar purposes + national standards.**
- **Examples of additions and changes necessary when adding DC**
  - **8.3 – 8.4**
  - Add: The marking according to the addition in clause 8.1 shall be placed so that it is readable also after the plug inserted in the socket outlet.
  - **9.**
  - Add relevant gauges.
  - **9.101**
  - Add at the end of the requirement: standard sheet III b, III c, IV b and IV c.
  - **15. Interlocked socket-outlets**
  - Socket-outlets for AC and DC might be designed for 16 A current maximum.
  - Plugs for loads for AC and DC rated for up to 2,5 A can be connected and disconnected without interlocking. Plugs for 2,5 A are rated for AC and DC without interlocking mechanical or electronic functions.
  - For loads higher than 2,5 A, the standard AC and DC plug can be used if it is equipped with a mechanical or electronic interlocking switch function with or without connection to the outlets cover. The function shall be designed in such a way that a plug cannot be inserted into or completely withdrawn from the socket-outlet while the plug-contacts can carry current, i.e. the plug-contacts shall be switched off from the load or high-ohmic during these procedures.

# DC Plugs and Socket-outlets

- **IEC 60 884-1 Plugs and socket-outlets for household and similar purposes + national standards**
- **Examples of additions and changes necessary when adding DC**
  - **20. Breaking capacity**
  - **21 Normal operation**